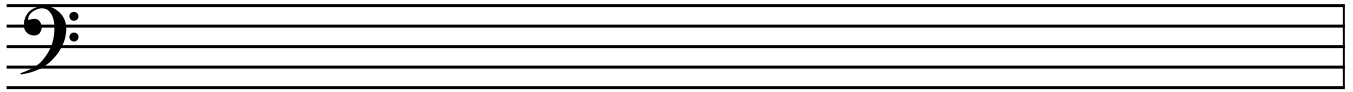


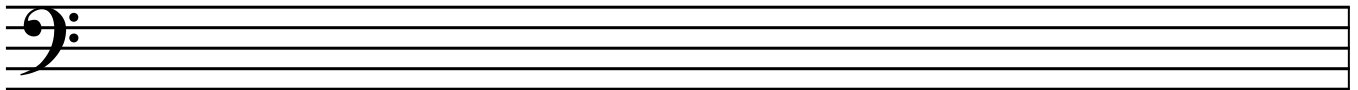
# Intro Strings Assignment

Bass

copy some more clef signs:



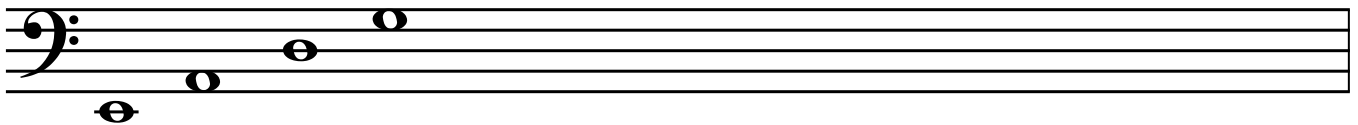
Draw some space notes:



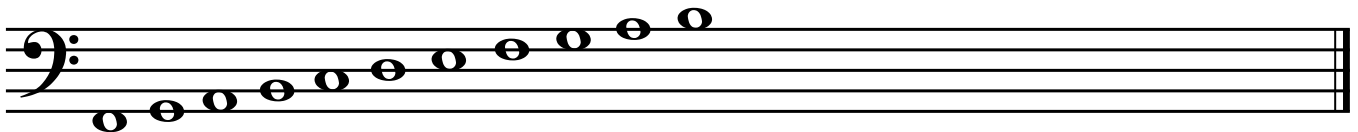
Draw some line notes:



Copy and label your open string notes twice - G, D, A, E



Draw all of the line and space notes in order, from low to high:



# Intro Strings Assignment - A String Notes

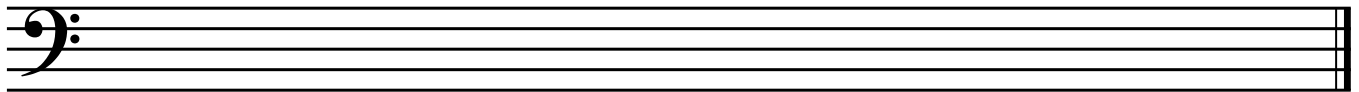
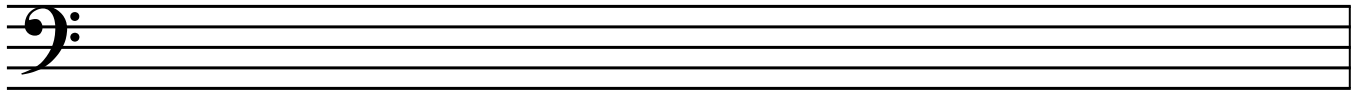
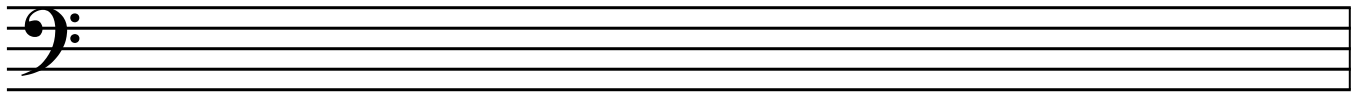
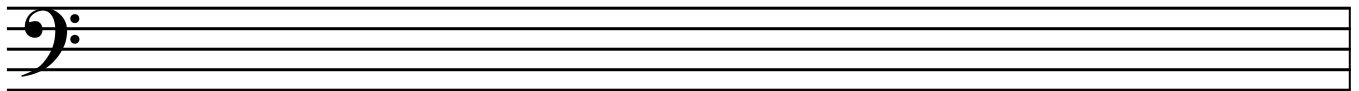
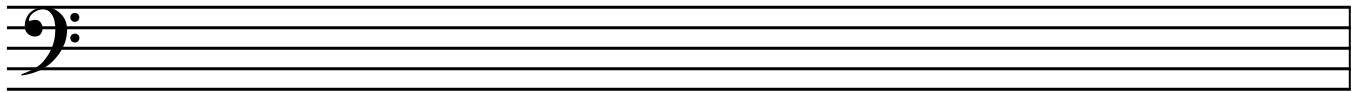
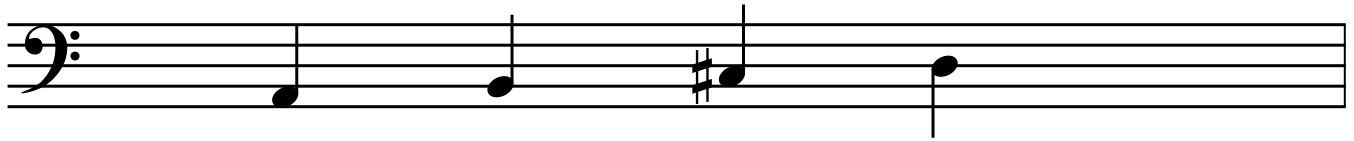
Bass A string notes:

A

B

C#

D String



# Intro Strings Assignment - D String Notes

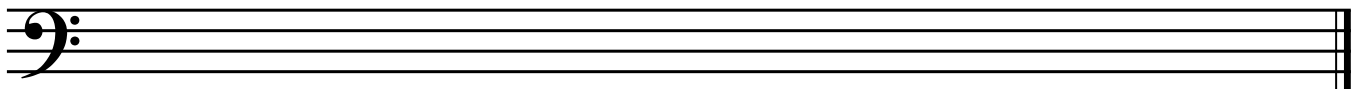
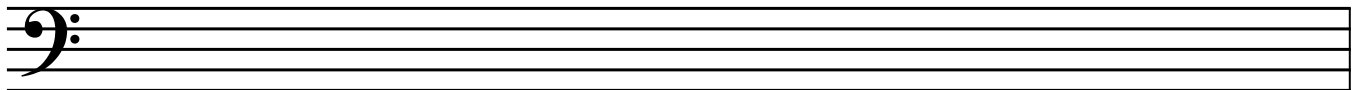
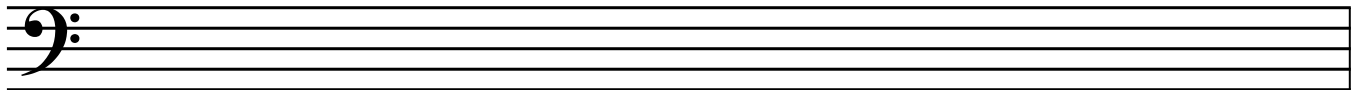
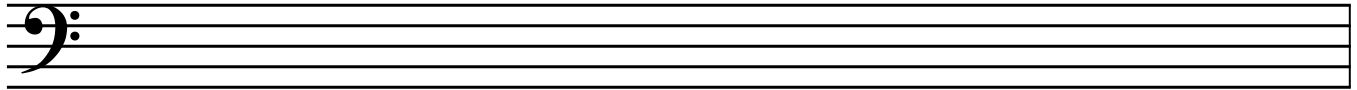
Bass D string notes:

D

E

F#


G String



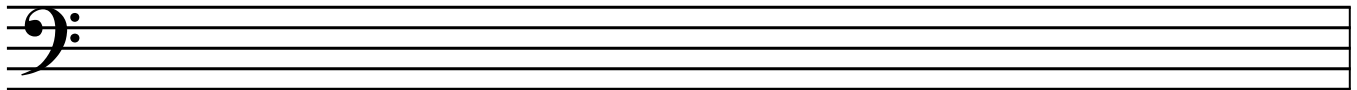
# Intro Strings Assignment - G String Notes

Bass G string notes:

G                      A                      B                      C (requires shifting)



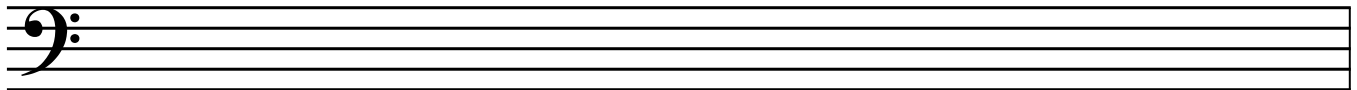
A musical staff with a bass clef. Four notes are written on the staff: G (first space), A (second space), B (third space), and C (fourth space). Each note is a quarter note with a stem pointing down. The notes are positioned above the staff lines.



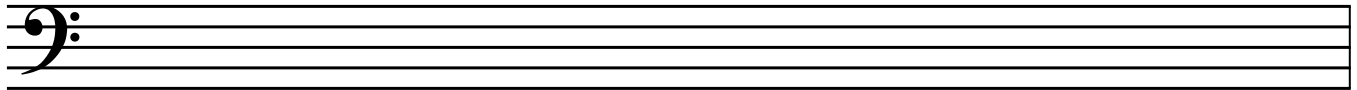
An empty musical staff with a bass clef, consisting of five horizontal lines.



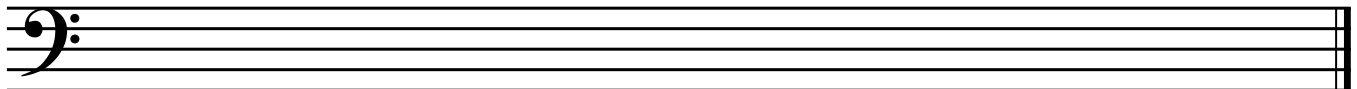
An empty musical staff with a bass clef, consisting of five horizontal lines.



An empty musical staff with a bass clef, consisting of five horizontal lines.



An empty musical staff with a bass clef, consisting of five horizontal lines.



An empty musical staff with a bass clef, consisting of five horizontal lines.

# Intro Strings Assignment - E String Notes

Bass E string notes:

E

F#

G#

A String

