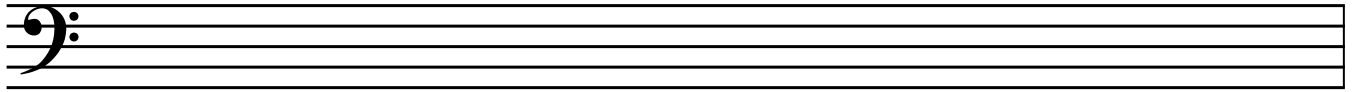


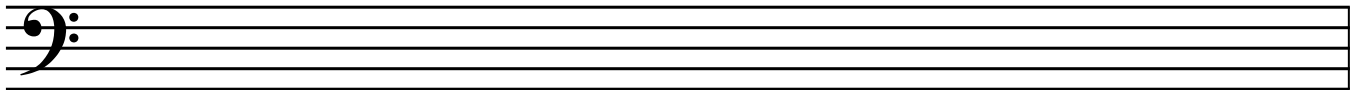
Intro Strings Assignment

Cello

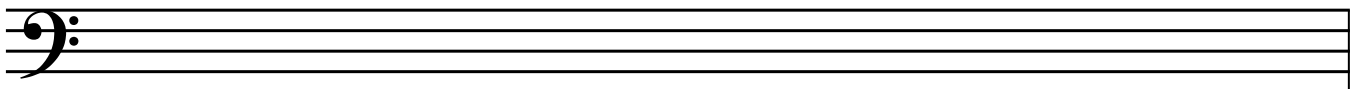
copy some more clef signs:



Draw some space notes:



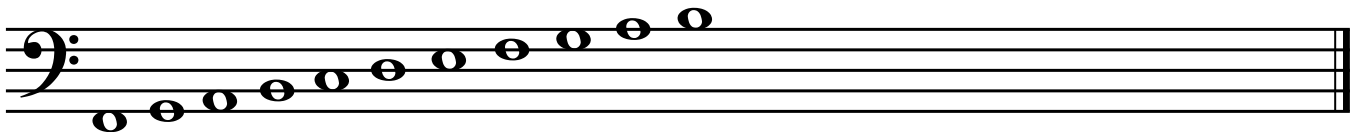
Draw some line notes:



Copy and label your open string notes twice - C, G, D, A



Draw all of the line and space notes in order, from low to high:



Intro Strings Assignment - A String Notes

Cello A string notes:

A B C# D

A musical staff in bass clef showing the notes A, B, C#, and D. The notes are placed on the second, third, fourth, and fifth lines of the staff respectively. A sharp sign is placed above the C note.

An empty musical staff in bass clef.

An empty musical staff in bass clef.

An empty musical staff in bass clef.

An empty musical staff in bass clef.

An empty musical staff in bass clef.

Intro Strings Assignment - D String Notes

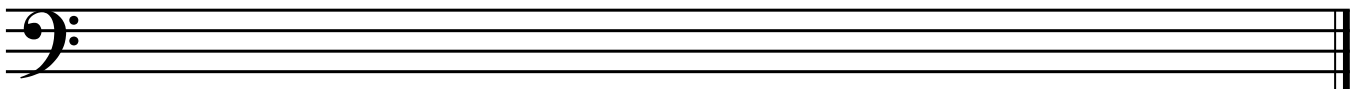
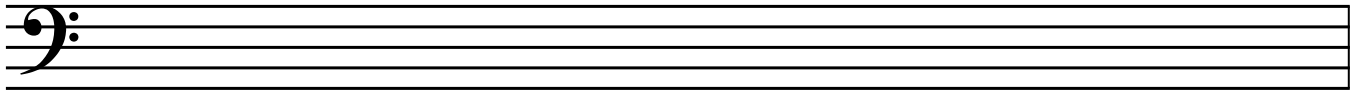
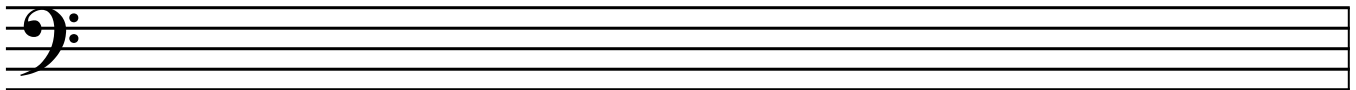
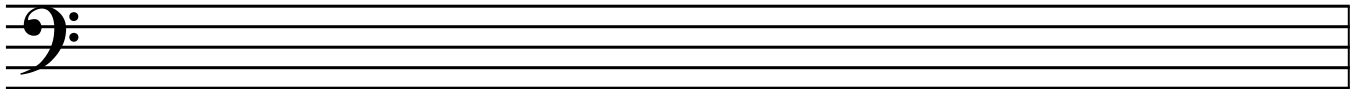
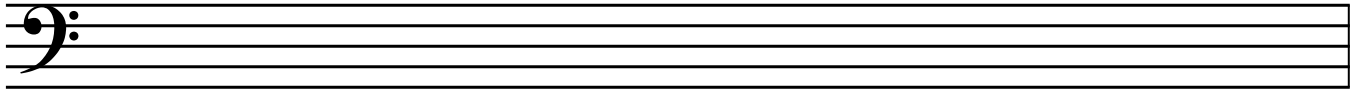
Cello D string notes:

D

E

F#


G



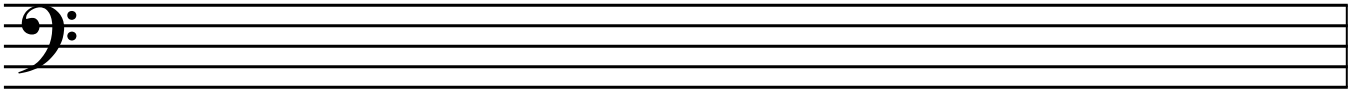
Intro Strings Assignment - G String Notes

Cello G string notes:

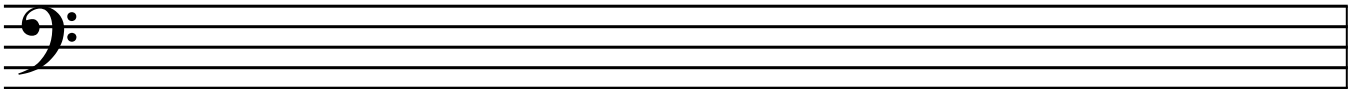
G A B C



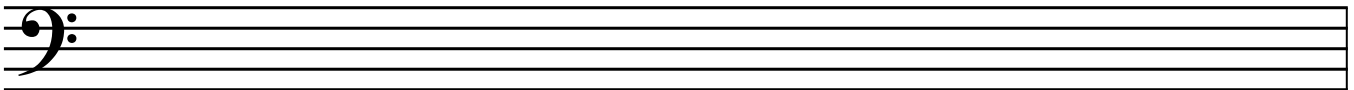
A musical staff with a bass clef. Four quarter notes are written on the staff, corresponding to the notes G, A, B, and C. The notes are positioned on the second, third, fourth, and fifth lines of the staff respectively.



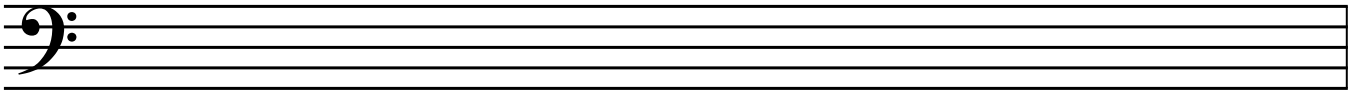
An empty musical staff with a bass clef, intended for practice.



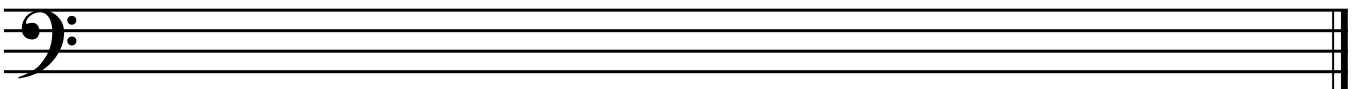
An empty musical staff with a bass clef, intended for practice.



An empty musical staff with a bass clef, intended for practice.



An empty musical staff with a bass clef, intended for practice.



An empty musical staff with a bass clef, intended for practice.

Intro Strings Assignment - C String Notes

Cello C string notes:

C

D

E

F

