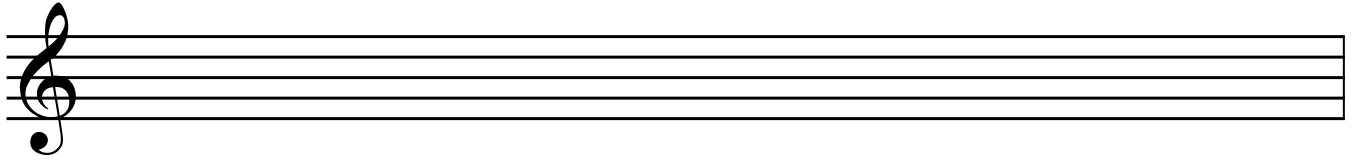


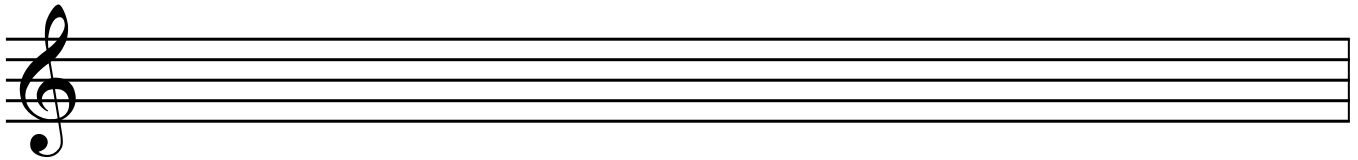
Intro Strings Assignment

Violin

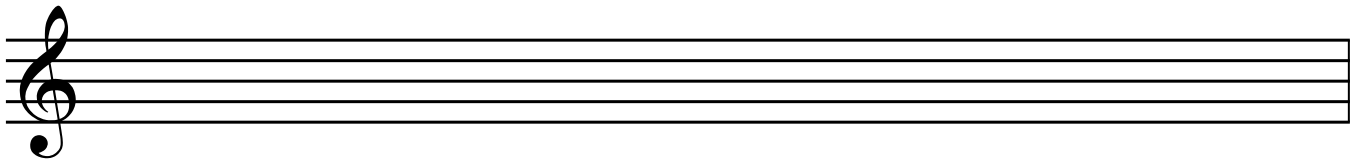
copy some more clef signs:



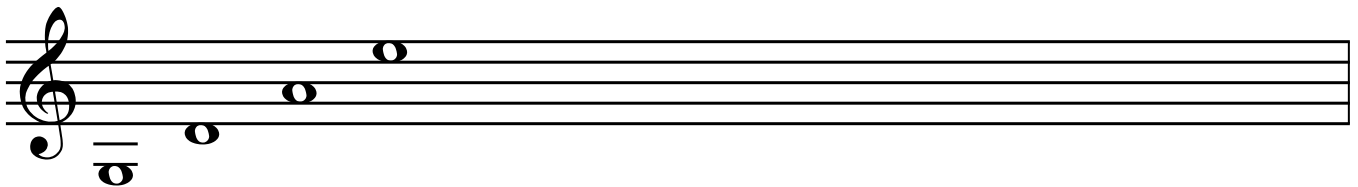
Draw some space notes:



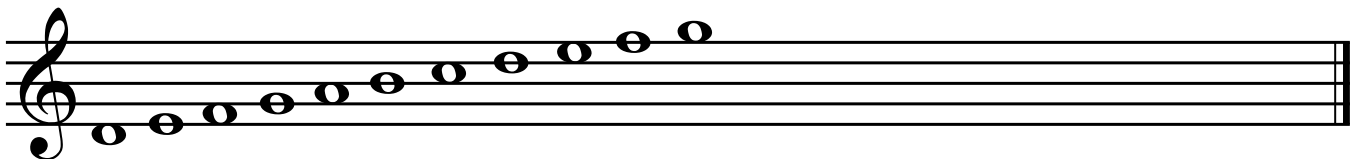
Draw some line notes:



Copy and label your open string notes twice - G, D, A, E

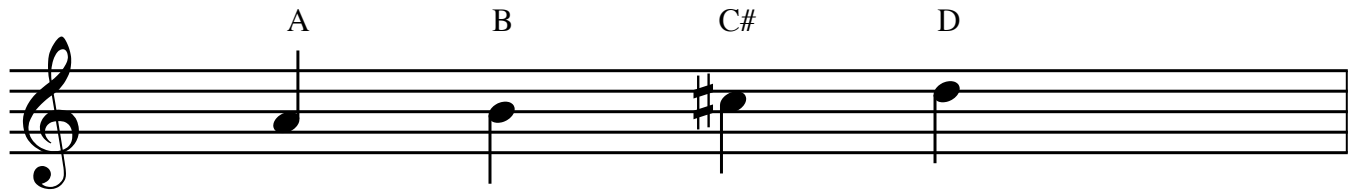


Draw all of the line and space notes in order, from low to high:

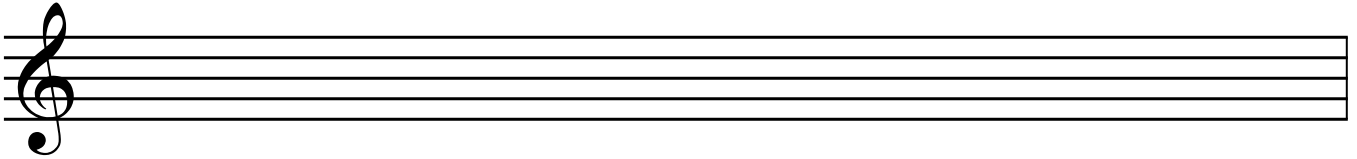


Intro Strings Assignment - A String Notes

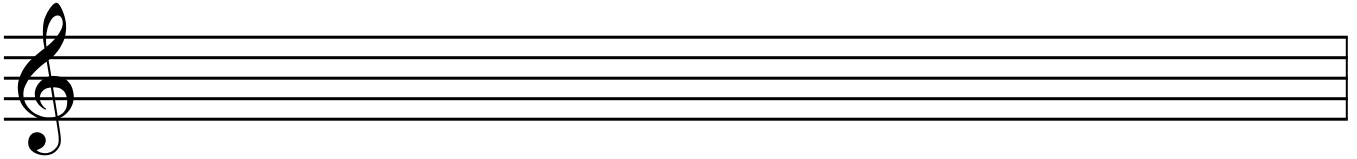
Violin A string notes:



A musical staff in treble clef showing four notes on the A string. The notes are labeled above the staff: A (on the second line), B (on the second space), C# (on the second space with a sharp sign), and D (on the second space). Each note is a quarter note with a vertical stem pointing down.




An empty musical staff in treble clef, consisting of five horizontal lines.



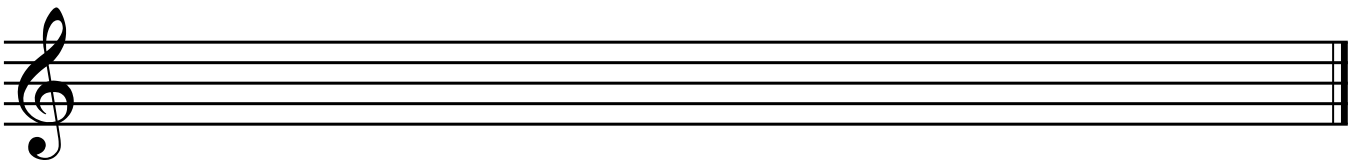
An empty musical staff in treble clef, consisting of five horizontal lines.



An empty musical staff in treble clef, consisting of five horizontal lines.



An empty musical staff in treble clef, consisting of five horizontal lines.



An empty musical staff in treble clef, consisting of five horizontal lines.

Intro Strings Assignment - D String Notes

Violin D string notes:

D E F# G

A musical staff in treble clef showing the first four notes of the D string: D (open string), E (first fret), F# (second fret), and G (third fret). Each note is a quarter note.

An empty musical staff in treble clef.

An empty musical staff in treble clef.

An empty musical staff in treble clef.

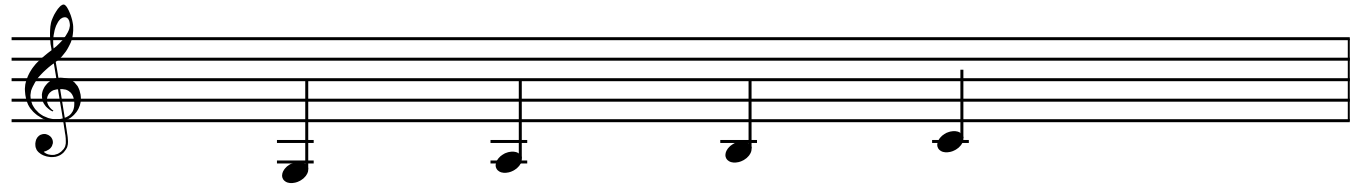
An empty musical staff in treble clef.

An empty musical staff in treble clef.

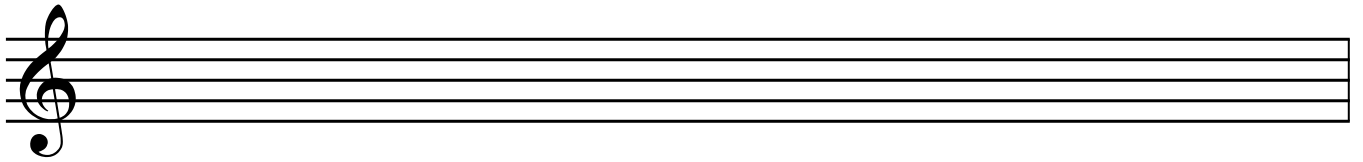
Intro Strings Assignment - G String Notes

Violin G string notes:

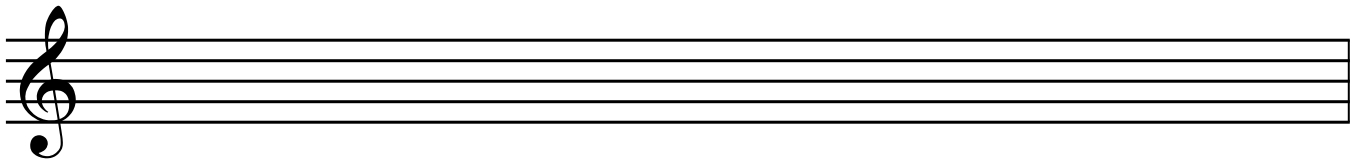
G A B C



A musical staff with a treble clef. Four quarter notes are placed on the G string (the lowest line of the staff). The notes are labeled G, A, B, and C from left to right. The G note is on the first line, A is on the second line, B is on the third line, and C is on the fourth line.




An empty musical staff with a treble clef, intended for practice.



An empty musical staff with a treble clef, intended for practice.



An empty musical staff with a treble clef, intended for practice.



An empty musical staff with a treble clef, intended for practice.

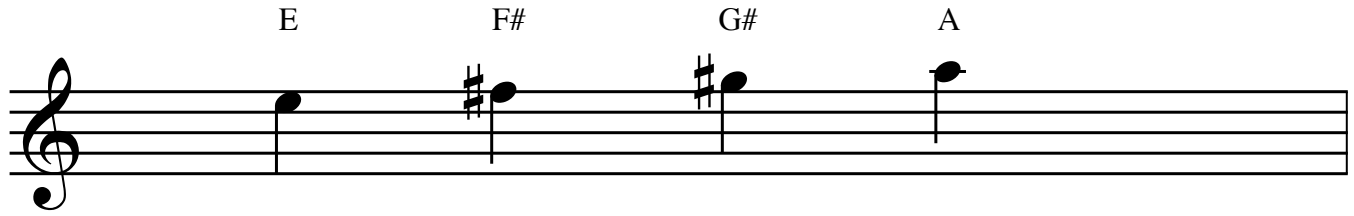


An empty musical staff with a treble clef, intended for practice.

Intro Strings Assignment - E String Notes

Violin E string notes:

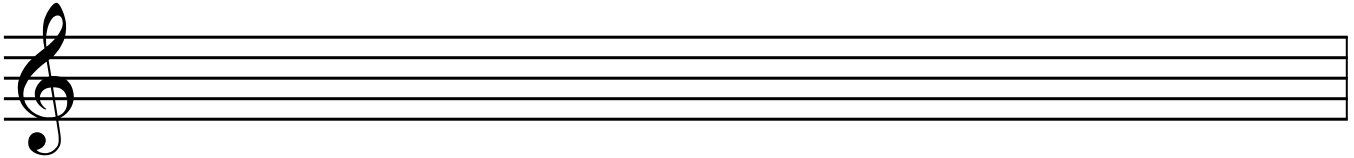
E F# G# A




A musical staff with a treble clef. Four notes are placed on the staff: E (first line), F# (second line), G# (third line), and A (third space). Each note is a quarter note with a stem pointing down.



An empty musical staff with a treble clef.



An empty musical staff with a treble clef.



An empty musical staff with a treble clef.



An empty musical staff with a treble clef.



An empty musical staff with a treble clef.